

A CCCTTTTACGGACAACCCATATAGAGCGAGAAGAAGAAGAAGAAGAAGAAG
 GAGAAAAGAGAATGGCGGGAATCATCCACAAGATCGAGGAGACCCTCCACATGGG
 AGGAGGCAACAAGGAAGGCGAGCACAAGAAGGAGGAGCACAAGGGCGAGCACAC
 CCTCCACATGGGAGAAGGCCACAAGGAAGGCGAGCACAAGGGCGAGCACAAGGA
 GGAGCACAAGGGAGGCTTCTCCGACAAGATCAAGGACAAGATTACGGCGGCAG
 CGACCAGCATGACAAGGAGGGTCAAGGAGAAGGACAAGAAGAAGAAGAAGGA
 CAAGAAGCACGAGGACGGGCACGGCCACGACAGCAGCAGCAGCAGCGACAGCGACTG
 AGGCCCCCCCGTTTCGCAGTCAGGTTATATTTACGTTTCATTCCGTTACCCGAGG
 CATCATAGATCGAGAGAAATATATCATTGCCCGACTGATAGCTGTTTCTGTTTCCCC
 CTTTACGTCTGTCAGATCTGAGGGTGGTGGGGGTTTCTTTGAAAA

B ATGGCGGGAATCATCCACAAGATCGAGGAGACCCTCCACATGGGAGG
 AGGCAACAAGGAAGGCGAGCACAAGAAGGAGGAGCACAAGGGCGAG
 CACACCCTCCACATGGGAGAAGGCCACAAGGAAGGCGAGCACAAGG
 GCGAGCACAAGGAGGAGCACAAGGGAGGCTTCTCCGACAAGATCAAG
 GACAAGATTACGGCGGCAGCGACCAGCATGACAAGGAGGGTACGA
 GAAGAAGGACAAGAAGAAGAAGAAGGACAAGAAGCACGAGGACGGG
 CACGGCCACGACAGCAGCAGCAGCAGCGACAGCGACTGA

C **Met** AGIIHKIEETLH **Met** GGGNKEGEHKKEEHKGEHTL
 H **Met** GEGHKEGEHKGEHKKEEHKGGFSDKIKDKIHGG
 SDQHDKEGHEKKDKKKKKDKKHEDGHGHDSSSSD
 SD **Stop**

Fig. 1 Suppl. A - FASTA sequence of D-10 full-length gene (*Eucalyptus DHN-10*). B - FASTA sequence of the coding region of *Eucalyptus DHN-10* gene (submitted as GZJ-2018 dehydrin-10; GenBank: MG948256.1). C - Translated sequence of *Eucalyptus GZJ-2018 Dehydrin-10* gene (ExPasy translate tool).

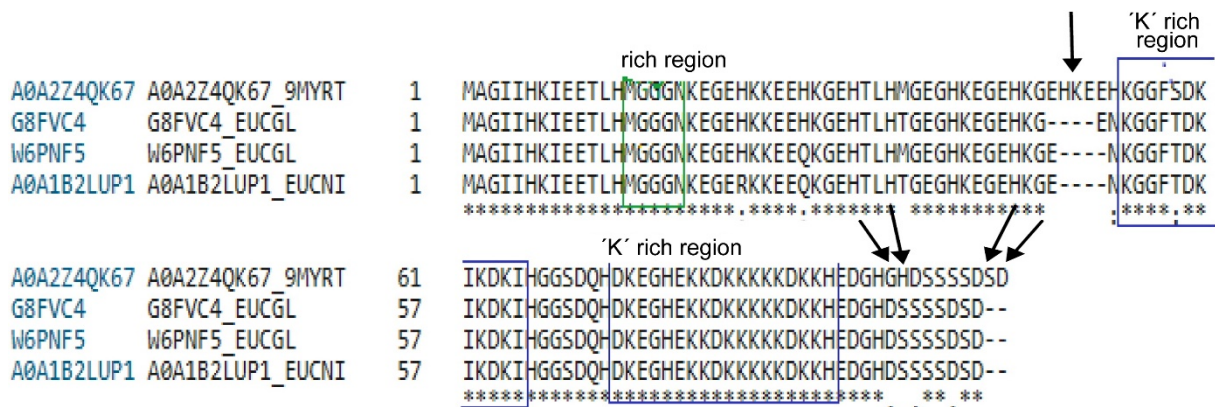


Fig. 2 Suppl. Multiple sequence allignment of *Eucalyptus* sp. GZJ-2018 dehydrin-10 protein (MG948256.1) with three most closely related sequences of same protein of *E. globulus* and *E. nitens*, present in NCBI data bank. G8FVC4: DHN-10 protein of *E. globulus* (AER27689.1); W6PNF5: DHN-10 protein of *E. globulus* DHN-10 (HG915712.1); A0A1B2LUP1 is the DHN-10 protein of *E. nitens* (KU674824.1). K rich regions are same, insertion of H, K, E, and S amino acid is pointed (G-rich region lies at 14 - 18 amino acid, K-1 region at 56 - 65, and K-2 region at 72 - 88).